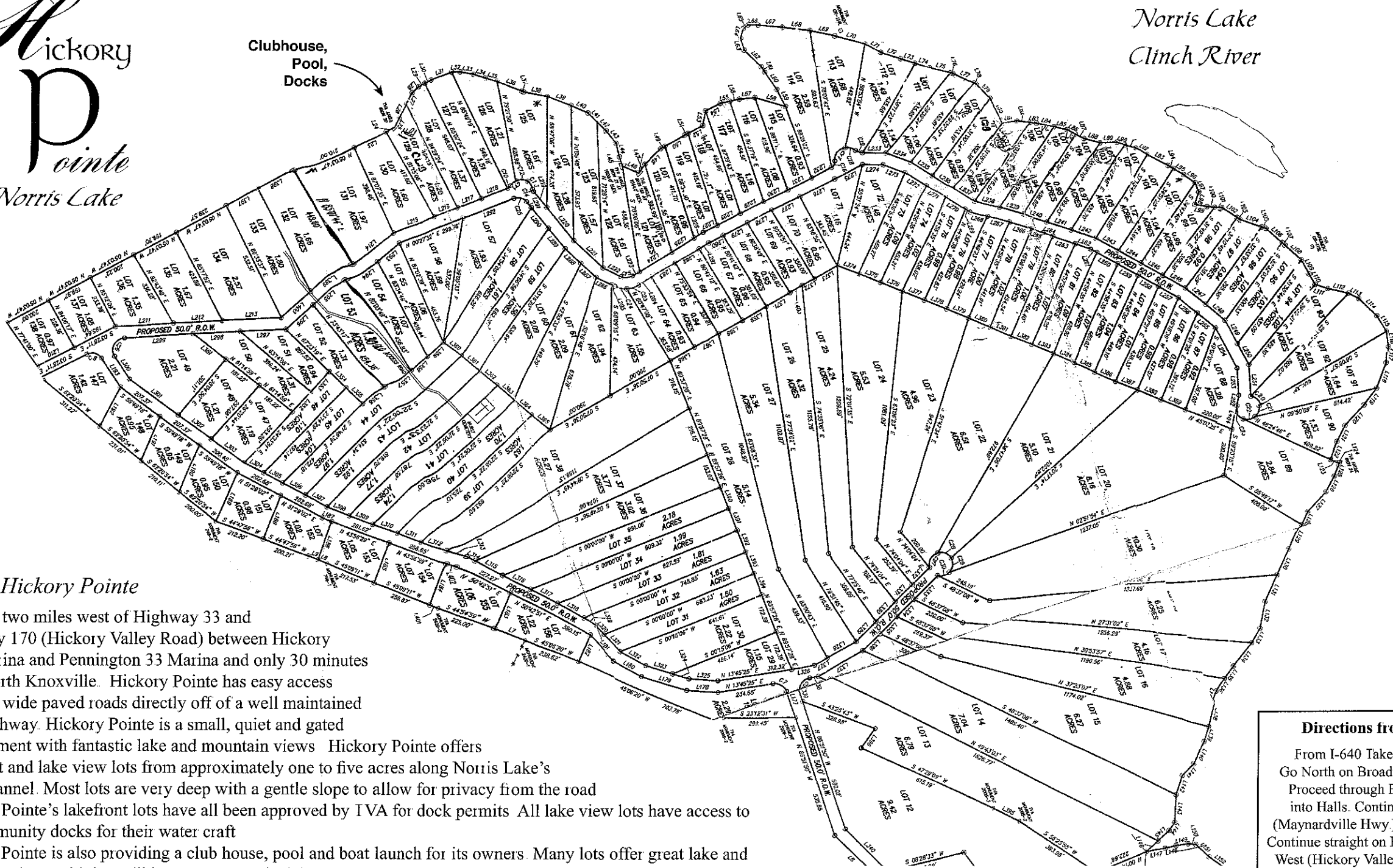
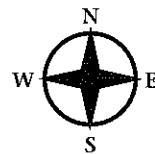


# Hickory Pointe at Norris Lake

Clubhouse,  
Pool,  
Docks

Norris Lake  
Clinch River



## About Hickory Pointe

Located two miles west of Highway 33 and Highway 170 (Hickory Valley Road) between Hickory Star Marina and Pennington 33 Marina and only 30 minutes from North Knoxville. Hickory Pointe has easy access with 20' wide paved roads directly off of a well maintained state highway. Hickory Pointe is a small, quiet and gated development with fantastic lake and mountain views. Hickory Pointe offers lakefront and lake view lots from approximately one to five acres along Norris Lake's main channel. Most lots are very deep with a gentle slope to allow for privacy from the road. Hickory Pointe's lakefront lots have all been approved by TVA for dock permits. All lake view lots have access to the community docks for their water craft. Hickory Pointe is also providing a club house, pool and boat launch for its owners. Many lots offer great lake and mountain views with incredible sunsets over the lake. Hickory Pointe is a very desirable area of Norris Lake with easy access to Knoxville, Maynardville, and Tazewell.

### Directions from Knoxville

From I-640 Take Broadway Exit  
Go North on Broadway (441)/Hwy 33  
Proceed through Fountain City and  
into Halls. Continue straight on 33  
(Maynardville Hwy.) into Maynardville.  
Continue straight on Hwy 33 to Hwy 170  
West (Hickory Valley Road) on left. Go  
approx. 1.9 miles on Hwy 170 to signs  
and turn right on Hickory Pointe Lane.  
Proceed about 1.2 miles to gated entrance